



Contact Free Conveyor Belt Skirting



INSTALLATION GUIDE



Important Safety Information:

This guide helps you to operate AirScape in a safe and effective way.

Familiarise yourself with the contents of this guide before you install the product and start using it.

Pay particular attention to the warning instructions given in this guide. Failure to observe these instructions entail the risk of serious injury and damage.

Do not attempt to commission the device if you do not understand the instructions provided.

Inform your supervisor or safety officer.

To avoid damage and injuries, the Contact Free Conveyor Belt Skirting “**AirScape**” may be used for its intended purpose only to avoid damage and injuries.

All necessary measurements must be implemented by trained personnel only. The owner is responsible for compliance with applicable regulations and provisions at the location of use.

Before installation, please ensure that the following requirements are met:

1. Professional configuration of the device in line with its use
2. Installation of the device in line with the assembly and operational manual
3. Operation of the device in the scope of the approved conditions of use
4. Regular visual checks in line with the manufacturer's instructions

Intended use**General use**

AirScrape is a Contact Free Conveyor Belt Skirting system which hovers freely above the conveyor belt, eliminating skirt friction and belt damage. Its unique array of inward facing hardened steel diagonal blades, deflects larger particles inwards while using the airflow of the conveyor belt and conveyed material to create an inward suction, sucking or drawing any dust and fine particles back into the product flow.

Component modification

Modifications of components and deviating configurations, installations, operations and maintenance are subject to written approval of **ScrapeTec**. Failure to observe these instructions could lead to increased risk of injury and damage.

Warning instructions

- During operation, unpredictable belt movements may occur, with a danger of crushing. Owners must take appropriate safety measures (safety guards, warning notice).

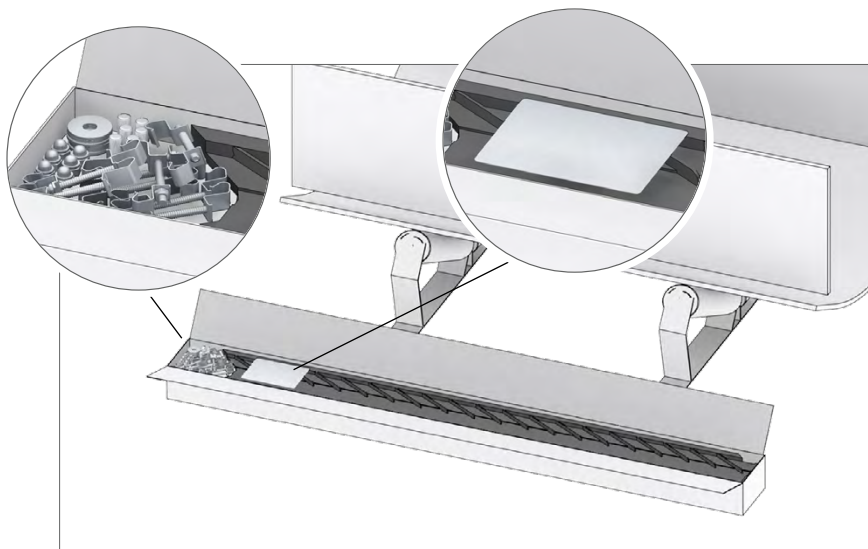
Safety measures during installation and maintenance work

- Installation and maintenance work on AirScrape blades must only be performed when the conveyor belt is stationary and locked out. Cordon off the work area. The work must be approved by the responsible works manager.
- Always use appropriate PPE.
- Always seek the owner's permission if you need to perform welding or cutting (hot work permits).
- If there is a risk of working at heights (working at heights permit) use of scaffolding, railings, safety nets and harnesses and all other relevant safety equipment is strongly advised.
- Before commissioning the Contact Free Conveyor Belt Skirting AirScrape, always ensure that the work site is completely clear and parts, such as scaffolding, lifting gear and tools are removed from the area. All guards have to be refitted to the previous locations.
- Check that all screwed connections are securely tightened following any commissioning and maintenance work.
- Use original parts only.

1

Contents

- 1 x AirScrape - left & right
length: 2 m each
inkl. lifting elements
- 1 x Distance sheet
- 14 x Bolts weld on
- 14 x Nuts
- 14 x lifting elements
- 1 x Installation guide and
data sheet



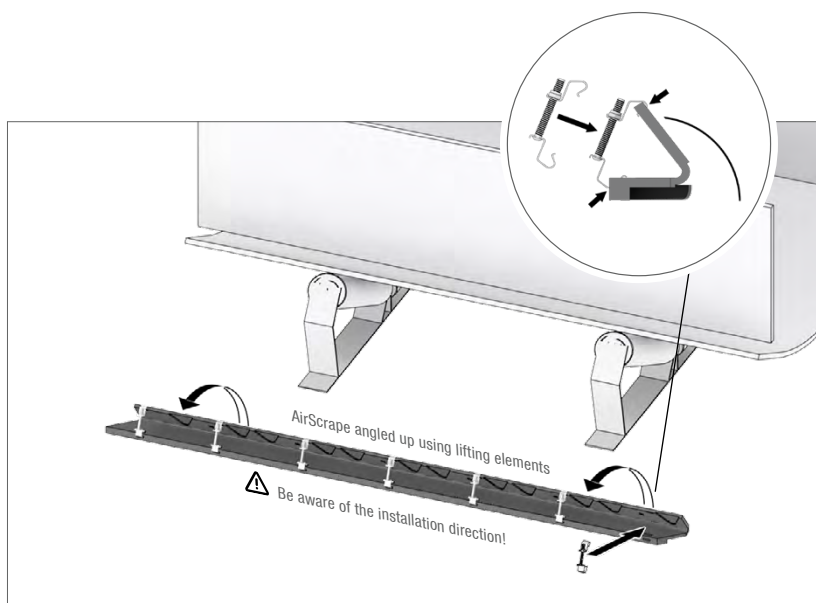
2

Prepare AirScrape for installation

Adjust the angle of the AirScrape elements to the angle of the belt trough to the site chute using the lifting elements.



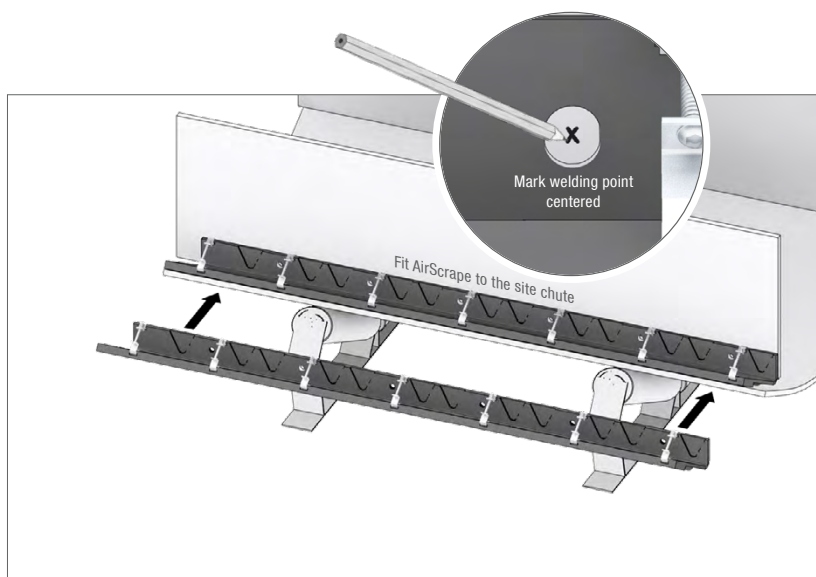
The installation direction must be coincident with the belt conveying direction!



3

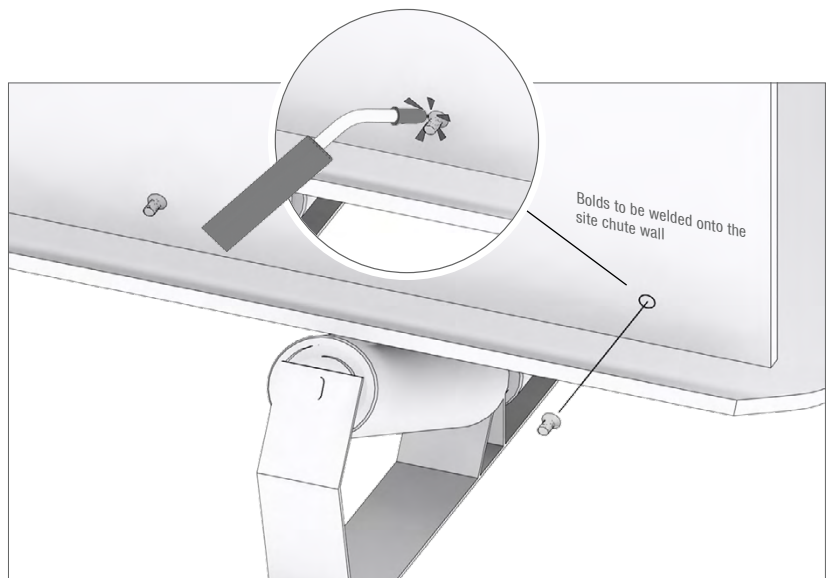
Marking the holepattern

The pretensioned AirScrape elements with the lamellas facing the belt and the holes facing the site chute wall. Then mark the welding points for the bolts centred inside the holes of the AirScrape onto the site chute.



4 Weld the bolts

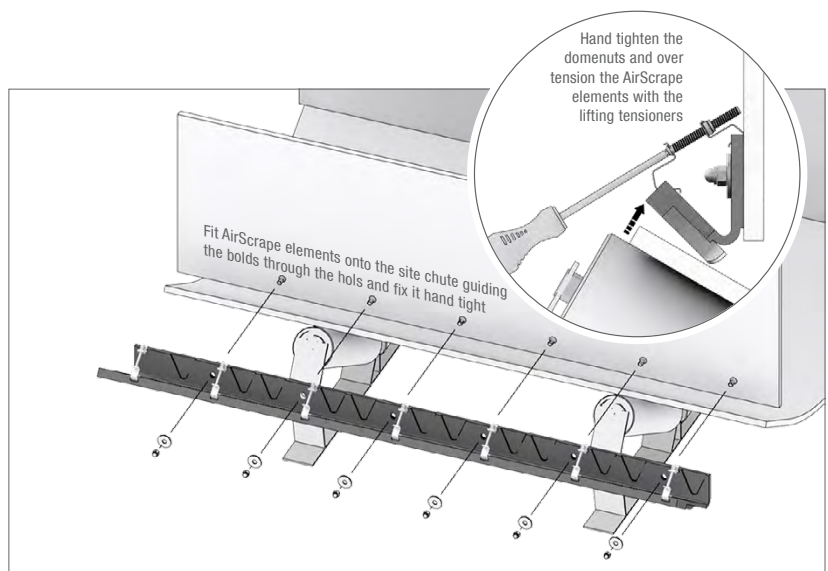
Take the AirScape elements off and weld the bolts accordingly to the markings on the site chuts.



5 Fit AirScape

Layout the AirScape element onto the belt and guide the bolts through the holes. Use a washer and a nut per bolt and screw it up hand tight!

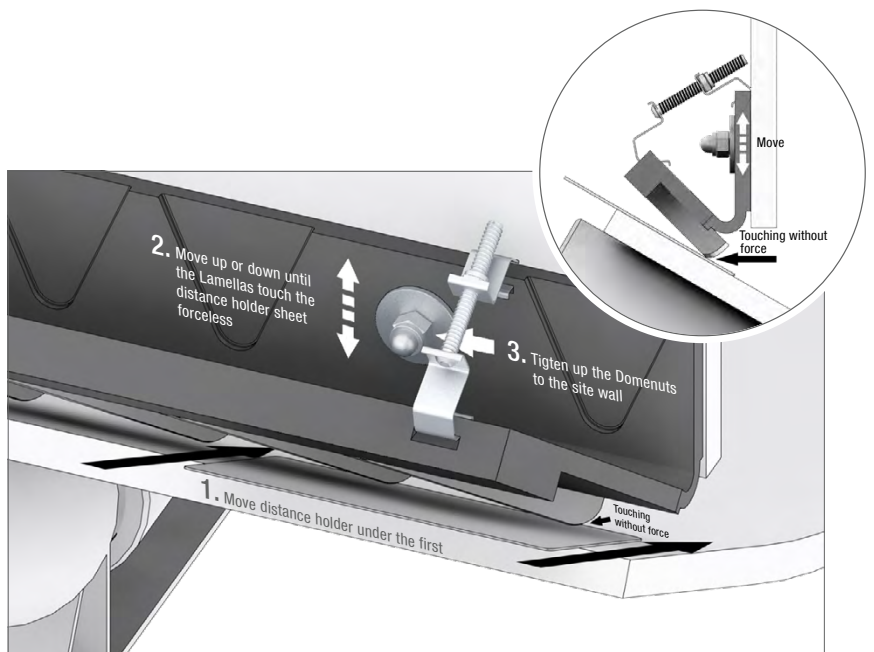
In preparations for the adjustments, the entire AirScape lifting elements needs to be over tensioned so the lamella tips are visible.



6 AirScape adjusting and tightening

1. For the adjustments move the distance holder sheet underneath the AirScape and move the distance metal sheet under the first bolt of the AirScape.
2. Move the AirScape up or down using the long holes so that the lamellas just touching the sheet.
3. Tighten up the dome nut to get the AirScape into the final position.

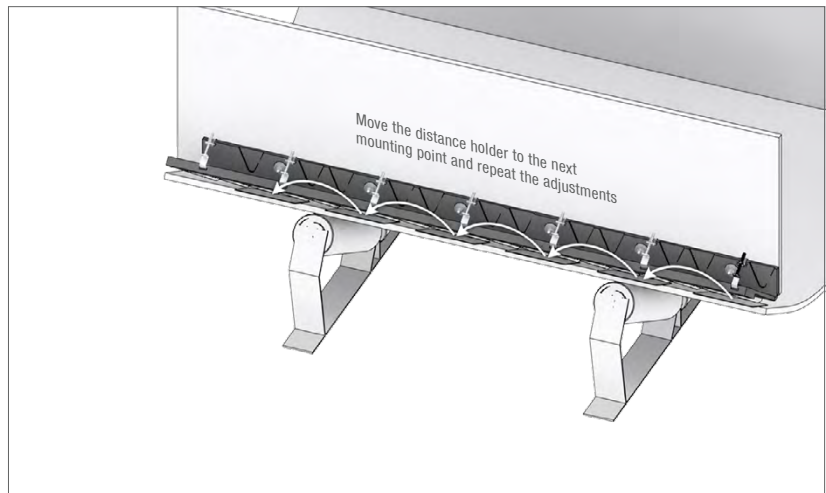
Note:
Distance holder sheet still needs to be movable under the lamella tips.



7

Continue with the adjustments on all the other bolts and dome nuts

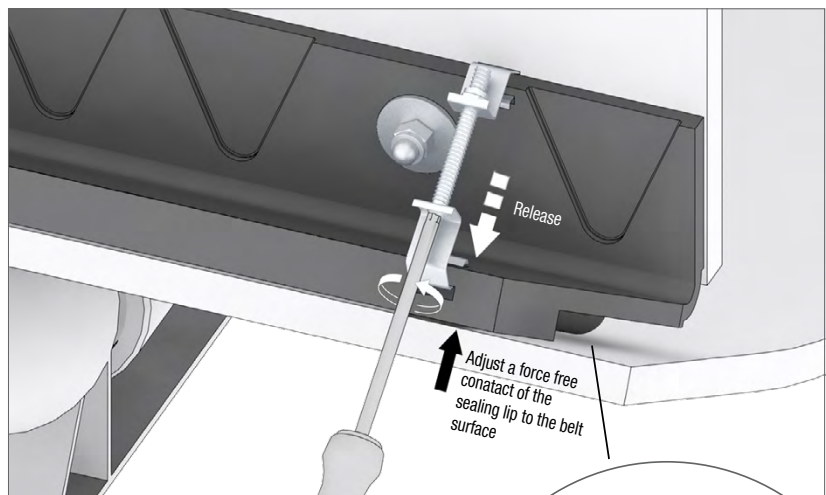
Move the distance holder from one mounting point to the next and repeat the procedure until all the mounting points are adjusted and the dome nuts tightened up.



8

Adjust AirScape into the operation position

Using the lifting elements adjusting the AirScape to the trough angle towards the belt surface so the sealing lip just touches the belt. Ideal is a small gap.



9

Before commissioning

1. Check conveying direction
2. Check all screw fastenings
3. Check the tension of the lifting elements
4. The distance holder sheet needs to be movable without force between belt and AirScape

