

ADVANTAGES

- the PrimeTracker immediately reacts already in case of the slightest off-centre running of the belt
- it guides the belt with very low friction and small forces and guarantees a long service life
- it does not “wait“ for the guide roller to tilt vertically (as with other systems), but reacts before
- it also functions perfectly in reversing mode
- easy installation
- maintenance-free
- special pivot bush, very durable
- it guarantees optimum position at the transfer points. In combination with the AirScrape spillage is no longer possible

Thorsten Koth

Managing partner
Sales & Distribution

Phone +49 2842 9 32 92 94

Mobile +49 171 1 24 22 59

t.koth@scrapetec.com

scrapetec.com

Wilfried Dünwald

Managing partner
Product development & Sales

Phone +49 2842 9 32 92 92

Mobile +49 172 1 57 30 89

w.duennwald@scrapetec.com

scrapetec.com



ScrapeTec International GmbH

Altfelder Straße 190

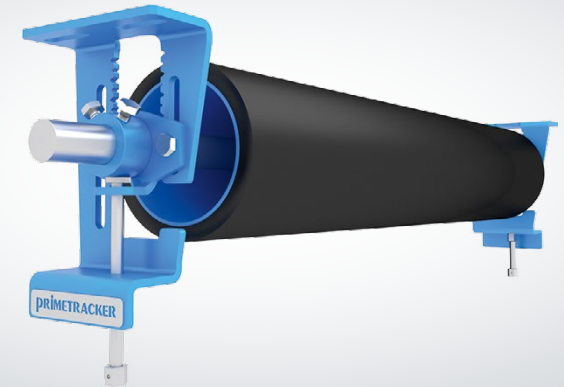
47475 Kamp-Lintfort, Germany

Phone +49 2842 9 32 92 93

info@scrapetec.com

scrapetec.com

PRIMETRACKER



CONVEYOR BELT TRACKING ASSISTANT

MAINTENANCE-FREE

WORKS PERFECTLY IN
REVERSING MODE

REACTS
IMMEDIATELY

HIGH
ENDURANCE

LOW FRICTION

THE CYLINDER BODY CAN TILT
IN ALL DIRECTIONS

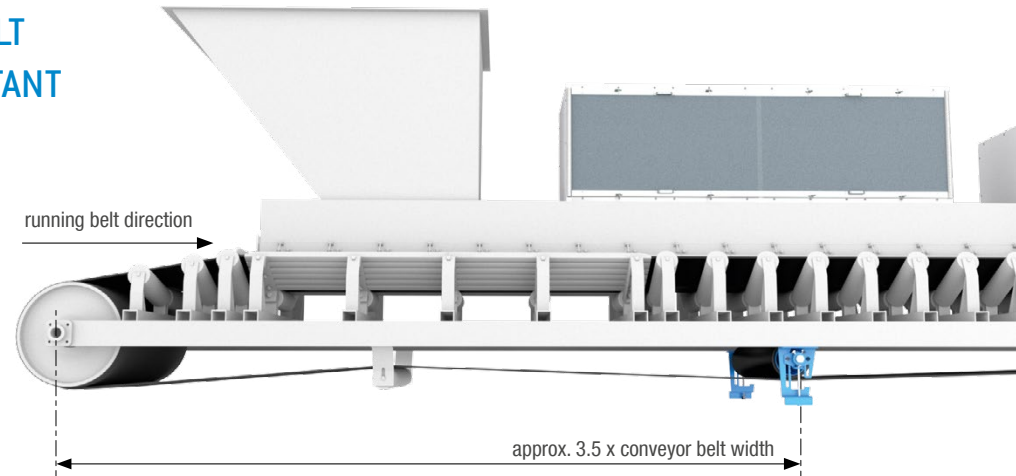
PRIMETRACKER

CONVEYOR BELT TRACKING ASSISTANT

SIMPLE
INSTALLATION

DURABLE

INSTALLATION POSITION



CAN BE INSTALLED ABOVE OR
BELOW THE BELT

MODE OF ACTION OF THE PRIMETRACKER FOR BELT MISALIGNMENT

